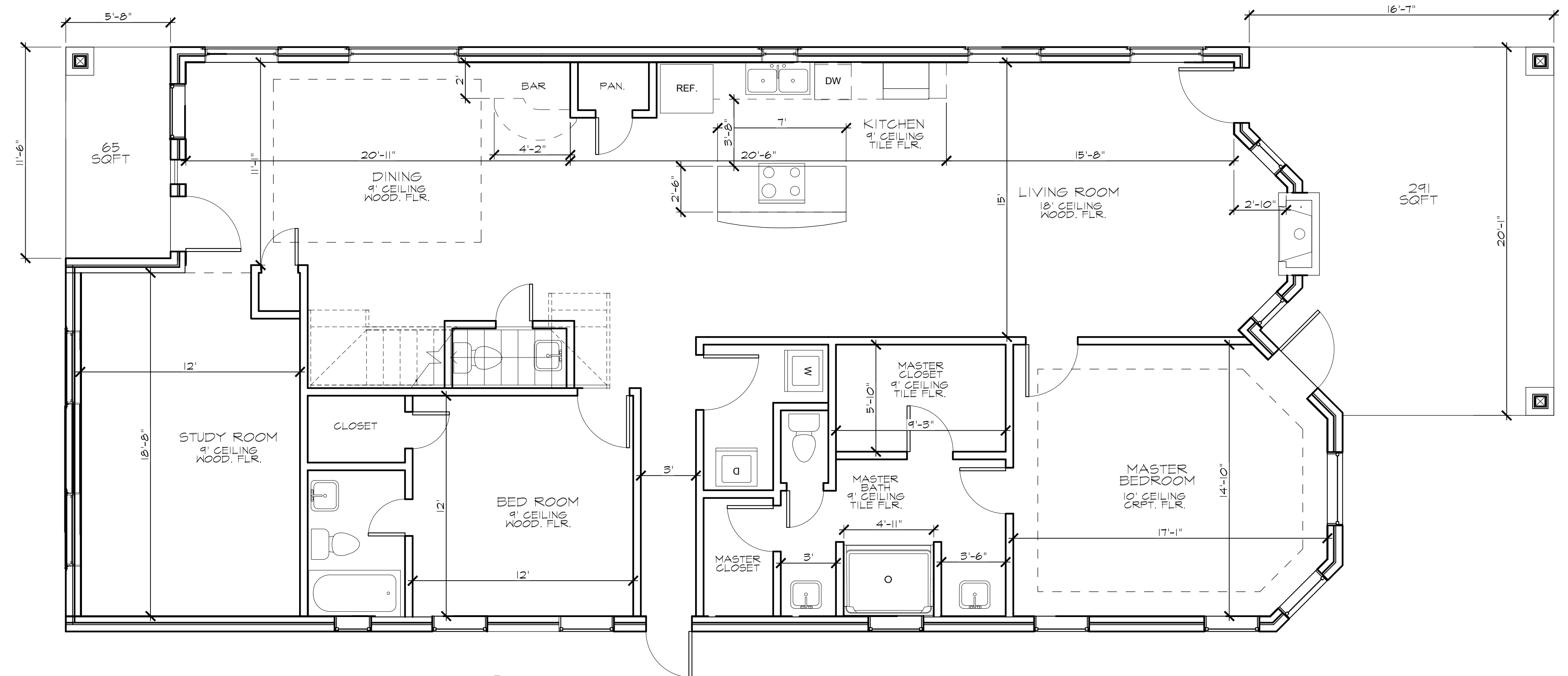
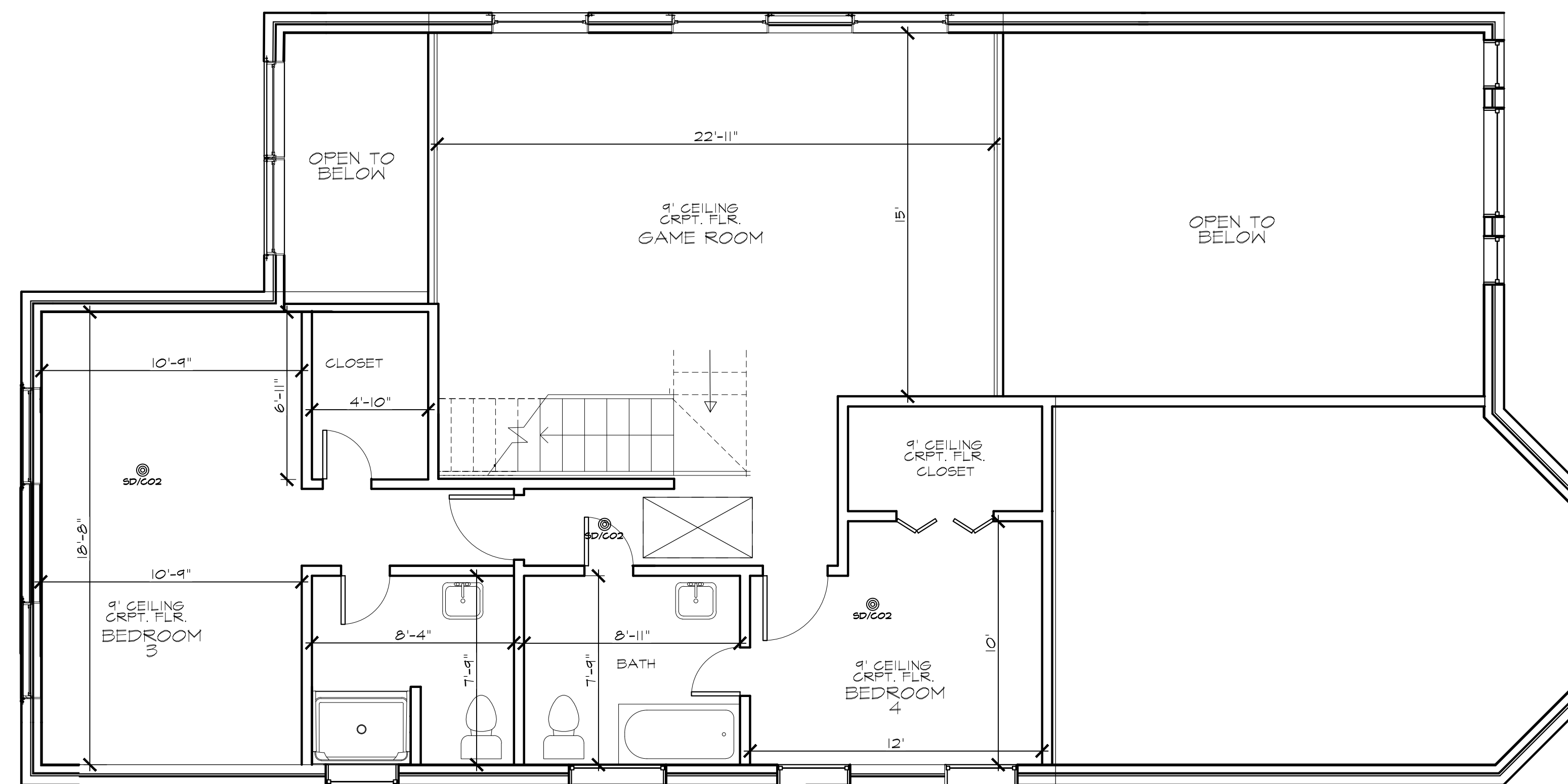


2947 OAK POINTE BLVD.
 TOTAL 3,056 SQFT + 474 SQFT CAR GARAGE
 FRONT PORCH 65 SQFT BACK PORCH 291 SQFT



1 FIRST FLOOR PLAN 2088 SQFT
 SCALE: 3/16"=1'-0"



2 SECOND FLOOR PLAN 1130 SQFT
 SCALE: 3/16"=1'-0"